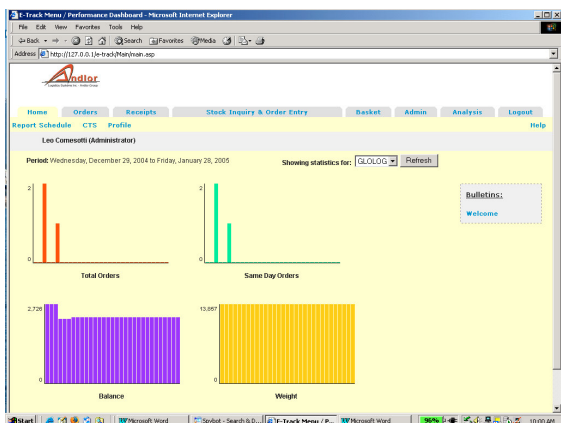


E-Track - WEB Based 3PL Tracking And On-Line Order Entry System



E-Track is a WEB Based Tracking system for 3PL Warehouse Orders, Receipts, Inventory Balances, Warehouse Activities, Shipment Tracking, Scheduled Reports, and On-Line Order Entry. E-Track is task oriented with intuitive screens requiring a minimum of data entry.

E-Track uses the Internet to provide a low-cost, continuously available method of accessing data from the third-party logistics provider.

Warehouse Receipts, Orders, Shipments, Stock Status data is provided showing:

- Stock Balances
- Item, Lot, Serial Number, Pallet ID Activity
- User selected search criteria

Users select the search criteria for each inquiry. Information is presented in WEB format or is automatically downloaded into EXCEL.

WEB Based Entry of Warehouse Orders:

- Client enters orders from the Inventory Balances
- Selects Items and Quantities for the Order
- Enters Shipping Information
- Completes Order

E-Track generates an Order Confirmation and transfers the data to the Andlor system. E-mails are sent to the CSR's and the order originators as an audit trail.

E-Track: Dynamic Information is available to clients in a manner to best meet their needs. CSR's can provide enhanced support functions. Operational service level is 7X24 with unlimited user access. Minimal communication costs are incurred.

Features:

- Multiple levels of security to protect data. Ability to support permission-based access, allowing strategic customers exclusive access to information.
- Browser-based software framework for deploying, administering and configuring an e-business portal.
- Powerful search capability to find Orders, Receipts, Inventory Items and other business critical information. Orders can be selected by status such as: Open, On-Hold, Deferred, Labeled, Picked, Shipped and Cancelled.
- Ability to provide dynamic information directly, in multiple formats. Analysis reports are generated by Type, Client and Carrier, by selected date ranges.
- Reports may be scheduled Daily, Weekly or Monthly, by Day, Date and Time of Day for automatic transmission based on the Report Name and E-mail destination.
- EDI transaction set data is displayed with a link to the source documents, providing an excellent audit trail.
- An executive dashboard provides summary information for each client showing the Order Level, the Same-Day Shipments and the total of unit activity weight.
- Images and files can be attached by item to the warehouse receipts and orders.
- Shipment tracking can hyperlink to carriers and courier WEB sites.
- Bulletins and messages are displayed globally or by client.
- On-line documentation is provided for all screens and can be customized for each client.
- Screens are designed for minimal data entry and the time required completing tasks.
- Rapid deployment foundation allows for quick implementation.

For more information and a demonstration please contact us:

Andlor Logistics Systems Inc.

Suite 210 - 850 West Hastings Street
Vancouver, BC V6C 1E1

www.andlor.com Tel: 604.687.1130
Sales@andlor.com Fax: 604.687.1189

